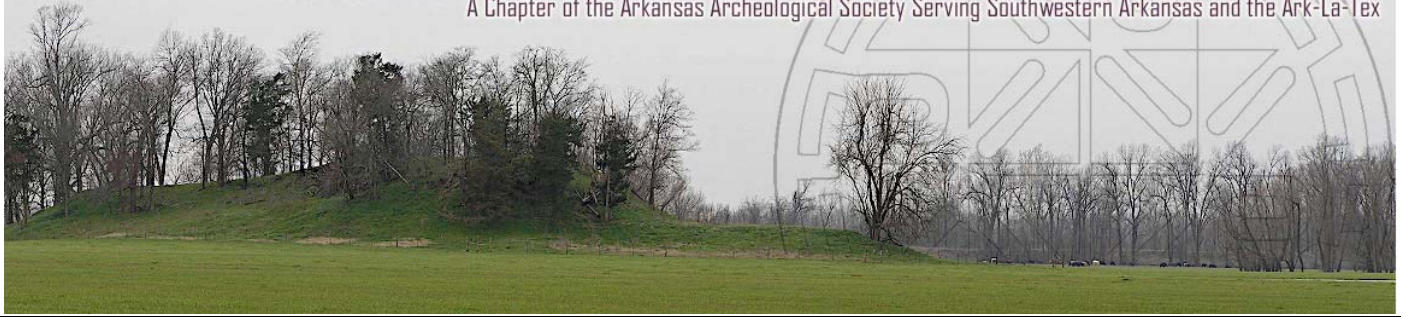


# KADOHADACHO NEWS

A Chapter of the Arkansas Archeological Society Serving Southwestern Arkansas and the Ark-La-Tex



New Series, Volume 4, Issue 8

November 2009

## November 10th Program: Sacred Spaces Old and New

The program for the November meeting of the Kadohadacho Chapter of the Arkansas Archeological Society will be James Rees, retired Arkansas educator and member of the Arkansas Archeological Society. Mr. Rees will give a lecture entitled *"What it means to Dwell in Beulah Land: What Camp Meetings Can Tell us about Ancient Ceremonial Centers and Sacred Spaces."* This study examines the Davidson Methodist Camp Meeting in Clark County, Arkansas, a traditional, frontier-style camp meeting that has been in continuous use since 1884 and talks about what its layout and use might tell us about prehistoric Native American ceremonial sites in the same region.

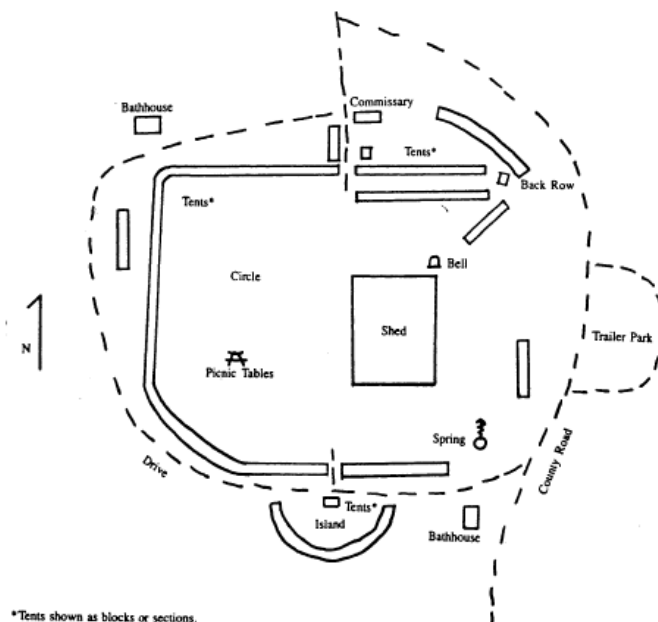
Rees has been interested in sacred spaces in general and the Davidson Methodist Camp meeting in particular since the 1980s when he completed *Archaism and Social Consensus in an Arkansas Camp Meeting* (1987), his MA thesis in the Department of Anthropology at the University of Arkansas. After a distinguished career in teaching history and anthropology in Northwest Arkansas high schools, Rees is returning to anthropology by becoming an active member of the Arkansas Archeological Society and volunteering at digs such as Jones Mill, Isgrig, Carden Bottoms, Kingsley Plantation and many others.



Come learn about new and old sacred places with Jim Rees (pictured to the left) on **November the 10th at 7:00pm in Bruce Center room 104 on the campus of Southern Arkansas University.**



**Above:** People listen to the Sunday night service outside the tabernacle at the Davidson Methodist Campground in August of 2009 (Photo by Arkansas Democrat Gazette/Stephen B. Thornton). **Below:** A map of the Davidson campground showing campers' terms for settings and features (From Rees 1987:70).



\*Tents shown as blocks or sections.



### Kadohadacho Speakers Fall 2009 and Spring 2010

- **December 8**— John Miller, AHTD Archeologist, talks about excavations at the Cedar Grove in Lafayette County.
- **February 9**—Dr. David Palmer, Louisiana Division of Archaeology, will talk about archeology at historic plantation sites in southeastern Louisiana.
- **March 9**— Dr. Diana Greenlee, Louisiana Division of Archaeology, will talk about the Poverty Point site.
- **April 13**—Dr. Jane Anne Blakney-Bailey, AAS Toltec Station Archeologist will talk about new geophysical surveys and upcoming excavations at the most important Late Woodland site in the region.
- **May 11**— TBA

*Note: All Kadohadacho Chapter meetings will be held at 7:00pm in Bruce Center 104 (the old "Blue & Gold Room") on the SAU Campus.*



### CALL FOR VOLUNTEERS:

#### Toltec Mounds, October 30 – November 21

Several weeks ago, a large tree overturned along the southwestern lake bank at the Toltec Mounds site, ripping up a hole in the ground, around 5 meters by 5 meters in size. Over the next several weeks, Dr. Jane Anne Blakney-Bailey and a crew of volunteers are going to be excavating this area to determine what the profile looks like and to recover as much information and artifacts as possible. Below are the dates and times when she will be working. *She welcomes volunteers!* If you plan on coming out, please email Dr. Blakney-Bailey at [jblakney@uark.edu](mailto:jblakney@uark.edu) as she will need to let the state park staff know who is coming. **No experience is necessary.**

#### Schedule of Toltec Work

Friday October 30, 9 am to 4 pm

Saturday, October 31, 9 to 2:30 pm (note: a short day)

NO EXCAVATING ON FIRST WEEKEND OF NOVEMBER

Friday, November 13, 9 am to 4 pm

Saturday, November 14, 9 am to 4 pm

Friday, November 20, 9 am to 4 pm

Saturday, November 21, 9 am to 4 pm

### Historic Washington's Civil War

#### Weekend November 7th and 8th

The Civil War was one of the most trying times in our nation's history. During this event, walk the streets of a town touched by the hand of war. Washington became a shelter for refugees escaping from the Federal invasion of northern Arkansas. We will interpret the final two years of the conflict, when Washington was Arkansas's Confederate State Capital. Re-enactors from across the region will present living history demonstrations throughout the weekend. This year's Civil War Weekend will be an especially notable one, as event organizers confidently expect over 1,200 participants in this campaign-style battle, which will be fought over 600 acres of

forest, farmland and open fields around the historic town of Washington.

General admission is \$8.00 for adults and \$4.00 for children. The admission price covers demonstrations, historic building tours, surney rides, and parking. For more information, please contact Billy Nations, Historic Washington Chief Interpreter, at 870-983-2860.

### Joint Caddo/East Texas Conference:

#### March 18-21, Tyler, Texas

The first Caddo Conference was held in 1946 on the campus of the University of Oklahoma. Now more than 60 years later, the Caddo Conference is still going strong, and the 2010 Caddo Conference will be the 52nd meeting. The Caddo Conference is an informal organization of archaeologists (both professional and avocational), Caddo Indian peoples, historians, ethnohistorians, and others, that come together once a year (and rotating the meeting year to year between Arkansas, Louisiana, Oklahoma, and Texas) to learn more about current research on the native history and culture of the Caddo. From its modest beginnings in 1993, the East Texas Archaeological Conference (ETAC) has become an important, successful, and well-attended regional archaeological conference. At each conference, the current results of archaeological, ethnohistorical, and historical research projects conducted by professional and avocational archaeologist in the general East Texas region are presented to an interested public. The 2010 ETAC is the 17th that has been held over the years. The 1999 ETAC was also held in conjunction with the Caddo Conference. Papers are invited on the archaeology, history, and culture of the Caddo Indians. Please send paper titles and abstracts by January 31, 2010 to: Dr. Timothy K. Perttula at [tkp4747@aol.com](mailto:tkp4747@aol.com) For more information, and to download registration forms, go to the conference website:

<http://www.52ndcaddo-17thetac.com/>

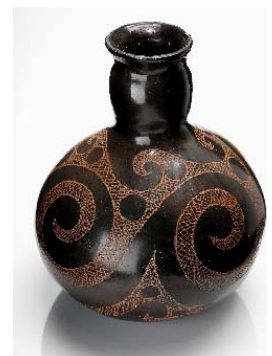
### First Lady Selects Caddo Pottery for Collection

*(Written by VICKIE PICKERING, Caddo Nation taken from Native American Times, October 19, 2009)*

Well known Caddo traditional potter Jeri Redcorn's "Intertwining Scrolls" was one of 45 pieces of art chosen to display at the White House. Her pottery was one of five Native Americans' artwork that was selected by the first lady Michelle Obama.

"I am honored to have my art work displayed in the Oval Office. The design and shape was inspired by a Caddo vessel created hundreds of years ago," Redcorn said.

Redcorn is known for reviving the Caddo style of pottery. She has received numerous awards for her traditional pottery. Most recently she received the "Honored One" at the 2009



Red Earth Festival, 2nd Place Traditional Pottery at the 2009 Red Earth and the "Best in Class" Three Dimensional; and 1st Place Traditional Pottery at the 2009 Southeastern Art Market held at the Chickasaw Nation.

Redcorn is a Rockefeller Fellow at the Newberry Library, Chicago, Illinois, and a Community Scholar at the Smithsonian Institution. Currently her work is being featured in a show in Wildeshausen, Germany

By the emails she has been receiving, the Caddo people are very proud of her accomplishments and the honor it brings to her and the Caddo people. She had not only brought honor to her people but to the people of all tribes.



**Pic of the Month:** Three Hodges Engraved bottles from the Cedar Grove site, an early historic Kadohadacho farmstead about one mile from Battle Mound in the Red River Valley, near Garland City, Arkansas. At this site Hodges Engraved vessels in mortuary contexts were evenly distributed among individuals of both sexes and all ages and sherds of this type appeared throughout the midden. This suggests that even the fanciest Caddo fine ware types were made for everyday use by everyone. But because this farmstead is so close to Battle Mound, we cannot be sure that the people who lived here were ordinary Caddo farmers.

You will notice a marked similarity between these Hodges Engraved vessels' designs and that of Jeri Redcorn's "Intertwining Scroll" pot now on display at the White House (see page 2 of this newsletter). This vessel type is the inspiration for Ms. Redcorn's traditional design.

Unfortunately, these three vessels were a part of the Cedar Grove pottery collection that was stolen from the AAS-SAU Bruce Center facility in the summer of 2006. **If have any information about the whereabouts of these vessels, please contact Dr. Jamie Brandon at the phone number or address to the right.**

## Join the Southwest Arkansas Archeology E-Mail List

You can keep track with the latest local archeology news by joining the Southwest Arkansas Archeology e-mail list.

The Southwest Arkansas Archeology List [SWAR\_ARCH] is meant to help spread information about archeological news and activities in southwestern Arkansas...and, of course, the list will remind members of the Kadohadacho Chapter of the Arkansas Archeological Society about the monthly meetings.

To join simply send an e-mail message to

[SWAR\\_ARCH-subscribe@yahoo.com](mailto:SWAR_ARCH-subscribe@yahoo.com)

You may also join be e-mail list by contacting Jamie Brandon at [jcbrandon@saumag.edu](mailto:jcbrandon@saumag.edu)

---

## Contact Us:

Dr. Jamie C. Brandon  
Research Station Archeologist  
Southern Arkansas University Research Station  
PO Box 9381  
Magnolia, AR 71754  
870-235-4229  
[jcbrandon@saumag.edu](mailto:jcbrandon@saumag.edu)

David R. Jeane  
Research Assistant  
Southern Arkansas University Research Station  
PO Box 9381  
Magnolia, AR 71754  
870-235-4230  
[drjeane@saumag.edu](mailto:drjeane@saumag.edu)



<http://www.saumag.edu/archeology>

Kadohadacho Chapter- Arkansas Archeological Society  
Southern Arkansas University  
PO Box 9381  
Magnolia, AR 71754  
<http://www.saumag.edu/archeology>

