

# KADOHADACHO

A Chapter of the Arkansas Archeological Society  
Serving Southwestern Arkansas and the Ark-La-Tex

New Series, Volume 3, Issue 5

May, 2008



## Summer Hiatus for *Kadohadacho News*

The Kadohadacho Chapter meetings and newsletter will take a brief break during the summer months as we will be busy with the AAS summer dig and training program (and other projects)...Watch out for the return of the newsletter in August of 2008 and the return of the meetings in September 2008. Have a nice summer and we hope to see you at the dig!



## 2008 "Summer Dig" in Malvern

The Arkansas Archeological Survey and Arkansas Archeological Society will cosponsor a Training Program in Archeology June 13-29, 2008, at the Jones Mill Site (3HS28) in Hot Spring County, Arkansas—not far off of the interstate near Malvern (Exit 98 on I-30).

The annual Training Program and excavation has been conducted at various sites throughout Arkansas since 1972. The 2008 Training Program will continue our 2007 investigations of Archaic period novaculite stone tool manufacture and exchange. The Jones Mill Site, which is listed on the National Register, may have served as a home base during Middle and late Archaic periods for local groups of hunter-gatherers who worked novaculite from nearby quarries. The excavation will be important for studying Archaic-period lifeways in the middle Ouachita River valley and for documenting the role that novaculite tool production played locally and regionally.



Arkansas Archeological Society members working during the 2007 Summer Training Program near Malvern, Arkansas.

No experience is necessary to participate, and both adults and children as young as 8 (accompanied by an adult) are welcome. Participants receive hands-on instruction in field methods and have the opportunity to enroll in week-long seminars on a variety of archeological topics. Stay as long or as short a time as you would like. Fees and expenses vary depending on length of stay. Registration costs are estimated to be about \$45-\$65, and participants cover their own cost of room and board.

Headquarters for the Training Program will be on the campus of Ouachita Technical College (OTC) in Malvern. Headquarters, seminar classes, Beginners' Orientations, the field laboratory, the scheduled evening talks, and our group camping area all will be located at OTC. From I-30 exit 98A, take Hwy 270 East towards Malvern, and turn left on West Moline (intersection with the large flag). Ouachita

Technical College is located at One College Circle, just across the railroad tracks and a left turn off of West Moline. We will be setting up our field laboratory in space on the campus of Ouachita Technical College. All of the seminars will be taught in classrooms at OTC as well. The evening talks will also be scheduled in the auditorium at OTC. Detailed maps will be in the packet that registrants receive about a month before the start of the Program.

The group tent camping area available for our use at Ouachita Technical College will be a grassy area behind the campus and near a city park. Note that this will be "primitive camping"—no hookups, water will be available, but for restrooms and shower facilities we are returning to the port-a-potties and sun-showers of past years. Parking is available

adjacent to the area. The cost for camping in the Society campground will be \$5 per night for one person, \$6 for two, and \$7 for three or more in the same camping spot. No pets are allowed in the group camping area or on the site. Ice will not

### **Optional Seminar Session 1**

Monday, June 16 through Friday, June 20  
Basic Excavation (AM Field/PM Lecture) – Tom Green/Jane Anne Blakney-Bailey  
Arkansas Indians (AM)-George Sabo  
Historical Archeology (AM) - Jamie Brandon  
Basic Lab (PM) - Claudine Payne  
Lithics (PM) – Julie Morrow

### **Optional Seminar Session 2**

Tuesday, June 24 through Saturday, June 28  
Basic Excavation (AM Field/PM Lecture) - Jane Anne Blakney-Bailey/Tom Green  
Historic Ceramics(AM)-Skip Stewart-Abernathy  
Site Survey(AM)-Jerry Hilliard  
Mapping(PM)-Tim Mulvihill

be available at the headquarters, but will be available for purchase at nearby convenience stores and gas stations. RV sites are available in the area at private campgrounds or Lake Catherine State Park, and should be reserved separately.

More specific details related to the 2008 Training Program are available in the March/April 2008 issue of *Field Notes*. You can also download more information and registration forms at:

<http://www.arkarch.org/>

If you have questions or need more information, contact Barbara Scott at [bhscott@uark.edu](mailto:bhscott@uark.edu), or 479-575-3556.

## Motels Near the Dig

For those of you who do not want to camp with us at the OTC facilities, below are a list of the motels in Malvern near the I-30/Hwy. 270 interchange and close to the tent camping, headquarters, and lab facilities at OTC. Some rooms have been blocked for AASociety until May 1st. You must make your own reservations. Be sure to mention that you are with Arkansas Archeological Society.

### Super 8 Motel

3445 Oliver Lancaster Blvd (I 30 exit 98B; on Hwy 270), Malvern, AR 72104

Phone: 501-332-5755

King: \$49.88 + tax

Double: \$55.88 + tax

Rooms had a complete makeover in 2006. Ask for room block for AASociety. Can ask for refrigerator when make reservations; rooms have coffee pot and continental breakfast is available.

### Comfort Inn

2320 Leopard Lane (I 30 exit 98A; on Hwy 270), Malvern, AR 72104

Phone: 501-467-3300

Toll free: 800-4CHOICE

King/Double \$70.00 plus tax

Pamper yourself here -- rooms with Jacuzzis are available (but not for prices here).

Rooms have coffee pot, microwave, refrigerator; continental breakfast available. Motel opened in 2006. Verify price when you call manager Henry.

### Americas Best Value Inns & Suites

1656 Industrial Road (I-30 exit 98A; on Hwy 270), Malvern, AR 72104

Phone: 888-315-2378

King: \$50.00 + tax; weekly \$185.00

Double: \$55.00 + tax; weekly \$210.00

Refrigerator, microwave, and coffee pot in room; continental breakfast available.

Americas Best is the only Malvern/Rockport motel to offer weekly rates. This hotel was formerly Executive Inn and Suites, and there were complaints last year, but is under new management and rooms have been refurbished.

## 2008 University of Arkansas /Henderson State University Archeological Field School

In addition to the Society Dig, there will be an archeological field school course offered through the

University of Arkansas and Henderson State University working at the site during the month of June.

The 2008 University of Arkansas/Henderson State University summer archeological field school is an intensive off-campus opportunity for students to learn archeology and work closely with a professor on a research project while earning university credit. Students receive training in all aspects of archeological field methods including mapping a site, techniques for archeological excavation and recording, soil description, and artifact identification. The field school is kept small in size to ensure individualized instruction and positive team work. No previous field experience is required, but students should apply to the instructor prior to registration.

The field school is open to current and visiting or guest students. Students can enroll through University of Arkansas (6 credit hours, Summer 5 term, Division of Continuing Education) in Anthropology 4256 (undergraduate, \$184 per credit hour) "Archeological Field Session" or Anthropology 561V (graduate, \$305 per credit hour), "Field Research in Archeology," or through Henderson State University (6 credit hours, Summer Session I) in Anthropology 3096 (undergraduate, \$154 per credit hour plus fees) "Archeological Field School." The summer field school will run from **June 2 to July 3, 2008**, with work at the site or field lab on Mondays through Fridays. Students will be able to arrange for housing on



*A view of the Jones Mill site (3HS24) near Malvern, Arkansas. The Arkansas Archeological Society Dig and an UofA/HSU archeological field school will be excavating here for the second year in a row this June.*

the HSU campus; daily transportation to and from the site will be provided.

Novaculite from the Ouachita Mountains was a key resource for making stone tools used locally and even outside the immediate region. This summer, our research project will investigate Archaic period sedentism, craft specialization, and novaculite tool production and exchange using excavations at a site near Hot Springs in southwest Arkansas. This archeological site on the Ouachita River has cultural material left behind by thousands of years of Indian habitation. Our work will expand investigation of a Middle Archaic period (circa 6000 years ago) deposit uncovered at 3HS28 in 2007 that had quantities of novaculite, magnetite, and igneous rock. We want to understand whether people living far from the Ouachita Mountains quarries obtained their toolstone directly or through trade with locals living at the Ouachita River.

Application deadline is **May 16, 2008**. For further information and application, please contact:

Dr. Mary Beth Trubitt  
Arkansas Archeological Survey  
Henderson State University, Box H-7841  
Arkadelphia, AR 71999-0001  
[trubitm@hsu.edu](mailto:trubitm@hsu.edu)  
(870) 230-5510

For more information about the Jones Mill/novaculite project check out:  
<http://www.hsu.edu/default.aspx?id=7270>

### Recap of April Meeting

For our April meeting we were treated to a very impressive (and well executed) lecture by Dr. Clarke Werneke, the Project Director for the Gault Project at the Texas Archeological Research Laboratory (TARL). Dr. Werneke was an excellent speaker and he entertained a great number of questions following his lecture on the important early finds at the Gault site in central Texas. Twenty-five (25) people were in attendance including folks from Magnolia (N=8), El Dorado (N=8), Waldo (N=2), Taylor (N=2), Fouke (N=1), Lewisville (N=1) and Camden (N=1). Following the question-and-answer session many members stayed late talking about artifacts and local archeology.

### Hurry to See the "Unearthed Treasures of Washington" Exhibit Before it's Gone...

The "Unearthed Treasures of Washington" Exhibit which will be on display from March 1 to June 30, 2008 at the Historic Washington State Park at the 1874 Courthouse. Take a look at some of the interesting archeological items that have been discovered under the direction of the Arkansas Archeological Survey and Society at Washington over the past 30 years. See what we have learned from what our ancestors left behind. Admission to the exhibit is free. For more information you can contact (870) 983-2684 or [HistoricWashington@arkansas.com](mailto:HistoricWashington@arkansas.com) for more details.

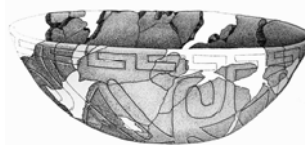
### Join the Southwest Arkansas Archeology E-Mail List

The Southwest Arkansas Archeology List [SWAR\_ARCH] is meant to help spread information about archeological news and activities in southwestern Arkansas...and, of course, the list will remind members of the Kadohadacho Chapter of the Arkansas Archeological Society about the monthly meetings.

To join simply send an e-mail message to:

[SWAR\\_ARCH-subscribe@vahoogroups.com](mailto:SWAR_ARCH-subscribe@vahoogroups.com)

You may also join be e-mail list by contacting Jamie Brandon at [jcbrandon@saumag.edu](mailto:jcbrandon@saumag.edu)



### Upcoming Conferences & Events

- **June 13-29**—Arkansas Archeological Society/Survey Summer Training Program (AKA "The Summer Dig"), Malvern, AR. For more details see: <http://www.arkarch.org/>
- **June 29-July 4**—World Archeology Conference 6, Dublin, Ireland. For more details see: <http://www.ucd.ie/wac-6/>
- **July 21**—Red River Symposium, Washington, AR. Contact Josh Williams, [josh.williams@arkansas.gov](mailto:josh.williams@arkansas.gov)
- **October 3-5**—South Central Historical Archaeology Conference, Winthrop Rockefeller Institute, Petit Jean Mtn., Morrilton. Contact: Skip Stewart-Abernathy, [stewartabernathy@uawri.org](mailto:stewartabernathy@uawri.org)

---

### Contact Us:

Dr. Jamie C. Brandon  
Research Station Archeologist  
Southern Arkansas University Research Station  
PO Box 9381  
Magnolia, AR 71754  
870-235-4229  
[jcbrandon@saumag.edu](mailto:jcbrandon@saumag.edu)

David R. Jeane  
Research Assistant  
Southern Arkansas University Research Station  
PO Box 9381  
Magnolia, AR 71754  
870-235-4230  
[drjeane@saumag.edu](mailto:drjeane@saumag.edu)



<http://www.saumag.edu/archeology>

Kadohadacho Chapter- Arkansas Archeological Society  
Southern Arkansas University  
PO Box 9381  
Magnolia, AR 71754  
<http://www.saumag.edu/archeology>

