

KADOHADACHO

A Chapter of the Arkansas Archeological Society
Serving Southwestern Arkansas and the Ark-La-Tex

New Series, Volume 2, Issue 2

February, 2007

February's Speaker:

Dr. Brandon to Speak about the SAU Museum and Regional Archeology

The first of the spring 2007 Kadohadacho Chapter meetings will be held Tuesday, February 13 at 7:00PM on the Southern Arkansas University campus in Magnolia, Arkansas—in Room 104 of the Bruce Center (bottom floor of the old Student Union). Our first speaker of the season will be the new AAS-SAU Research Station Archeologist, Dr. Jamie C. Brandon. Dr. Brandon will discuss the past and future of archeology in the region and the plans for the new SAU Museum which will be housed in the bottom floor of the Bruce Center and will interpret the archeology and history of southwestern Arkansas. Come meet the new archeologist and find out what the future holds.

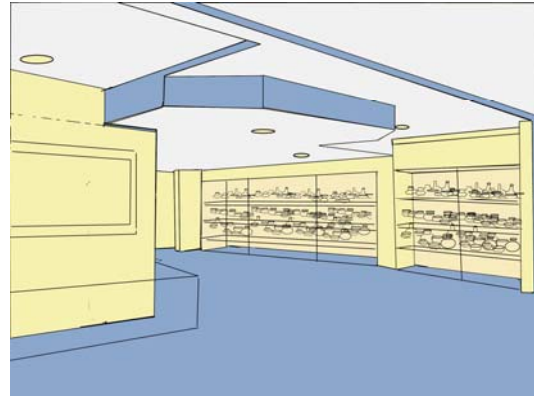
Dr. Brandon has a Ph.D. from the University of Texas at Austin and a MA from the University of Arkansas. He has over 17 years of experience as a professional archeologist, has worked on projects in 13 southeastern states, and has worked for the Arkansas Archeological Survey in various capacities since 1997.



Spring 2007 Kadohadacho Speakers

- **February 13**—"Southwest Arkansas Archeology and the SAU Museum Project: Where Do We Go From Here," by Dr. Jamie Brandon, AAS, Southern Arkansas University Research Station.
- **March 13**—"Arkansas Rock Art" by Jerry Hilliard, AAS, University of Arkansas-Fayetteville Research Station.
- **April 10**—"The Jones Mill Site and the Upcoming Society Dig" by Dr. Mary Beth Trubitt, AAS, Henderson State University Research Station.
- **May 8**—"High-Tech Archeology at Grandview Prairie in Hempstead County, Arkansas", Dr. Jami Lockhart, Director of AAS Computing Services Program.

Note: All Kadohadacho Chapter meetings will be held at 7:00pm in Bruce Center 104 (the old "Blue & Gold Room") on the SAU Campus.



An elevation drawing showing what the SAU Museum in the Bruce Center may look like following construction and exhibit installation.

Cemetery Documentation Project— Every Friday through March

The AAS-SAU Research Station will be helping out Edna Hopson and the Angels Anonymous Cemetery Association, a non-profit organization working to preserve cemeteries in the Columbia and Nevada County area, by mapping and photo-documenting three cemeteries in Waldo, Laneburg and near Prescott. The mapping and photography work will begin Friday, January 19 and continue every Friday until the project is completed (probably sometime in March). If you are interested in building your mapping or photography skills—or if you like cemeteries and just want to help out—contact Dr. Brandon at (870)235-4229 or jcbrandon@saumag.edu.



Turn of the century grave markers at the Craven Cemetery near Prescott in Nevada County.

Prelude to the 2007 Society Dig: Mapping at Jones Mill this March

It may not seem like it, but the June Arkansas Archeological Society dig and training program are just around the corner. This year's AAS Training Program will be held at Jones Mill (3HS28) near Hot Springs from June 8 through June the 24. These excavations are aimed at understanding habitation sites near the large prehistoric novaculite stone quarries in the Ouachita Mountains. Mary Beth Trubitt (the AAS-HSU Research Station Archeologist) hopes to use this summer's data to help figure out whether or not there were full-time novaculite mining specialists living at Jones Mill during the Archaic period, or whether it is a location where visitors lived periodically while mining novaculite to take back to their settlements.

Come help Dr. Trubitt get the HSU Research Station ready for this year's dig at Jones Mill by volunteering for a mapping project this March. The AAS-SAU staff will be traveling to help Dr. Trubitt for a week this March, but it unclear if it will be the SAU Spring Break (March 26-30) or the HSU Spring Break (March 19-23). Watch the March *Kadohadacho Newsletter* and the Southwest Arkansas Archeology E-mail list (SWAR_ARCH) for firm dates and information. Contact Dr. Brandon at (870) 235-4229 or jcbrandon@saumag.edu if you are interested in helping out.

Additionally, if you have read your latest issue of *Field Notes*, you'll know that you need to plan early and make your motel reservations SOON for the Society Dig (Hot Springs IS a resort Town). See Mary Little and Mildred Grissom's notice in the December issue of *Field Notes* (Number 333) for a list of area accommodations.

Magnolia to Host the 49th Caddo Conference in March

The Arkansas Archeological Survey and Southern Arkansas University are pleased to announce the 49th Caddo Conference to be held in the new Reynolds Center on the campus of Southern Arkansas University in Magnolia, Arkansas—located deep in the beautiful pine forests of southwestern Arkansas and in the original heartland of the Caddo. In addition to the many papers, the conference will feature a Sunday field trip to two legendary Caddoan sites in southwestern Arkansas—Crenshaw and Battle Mounds.

You can find the latest Caddo Conference updates on the AAS-SAU web site:

<http://www.saumag.edu/archeology/>



Prehistoric novaculite quarries such as this one near Hot Springs figure into the research design of our excavations this summer at Jones Mill.

East Texas Archeological Meetings in February

The East Texas Archeological Conference is scheduled for Saturday, February 10, 2007, at the Robert R. Muntz Library on the University of Texas at Tyler Campus in Tyler, Texas. For more information contact Mark Walters (walters@tyler.net).

March is Arkansas Archeology Month

Arkansas Archeology Month 2007 will be celebrated in March. The 2007 theme is *Arkansas Rock Art*, and already there are going to be a couple Archeology Month-related programs held in southwestern Arkansas. First, of course, is Jerry Hilliard's talk on Arkansas Rock Art at our March meeting of the Kadohadacho Chapter of the Arkansas Archeological Society (see above). Hilliard is the AAS Station Assistant at the University of Arkansas Research Station and is an integral part of the NEH-funded Arkansas Rock Art Project.

The second regional program will be given by Dr. Jamie Brandon, the new Research Station Archeologist at the Southern Arkansas University Research Station. Dr. Brandon will present a program on Historical Archeology in Southwestern Arkansas at the 1914 School in Historic Washington State Park on Tuesday, March 6th at 7:00pm.

Other events happening throughout the state include the Eastern States Rock Art Research Association (ESRARA) conference to be held March 23-24 at the UofA Winfield Rockefeller Center on Petit Jean Mountain, and an exhibit on rock art tentatively titled *Above and Beneath This World* to open March 10 at the Arkansas Technical University Museum.

The U of A Anthro Department's Stigler Lecture Series

If you happen to be making a trip to Fayetteville this spring, four guest speakers will visit the U of A for the Stigler Lecture Series on Archeology. Lectures will be held at Giffels Auditorium at Old Main on the UA campus, beginning at 7:30 p.m. The speakers and dates are as follows:

- **February 1**—Paul Goldberg, Boston University, *Where Geology Meets Archaeology*
- **March 8**—Jeffrey Clark, North Dakota State University, *Virtual Worlds: Visualizing the Past Through Advanced Technology*
- **March 29**—Donald Sanders, Institute for the Visualization of History, *How Virtual Archaeology Envisions the Ancient Near East*
- **April 5**—Adam Smith, University of Chicago, *Prometheus Unbound, or How Archaeology in the South Caucasus is Challenging W*

Join the Southwest Arkansas Archeology E-Mail List

You can keep track with the latest local archeology news by joining the Southwest Arkansas Archeology e-mail list.

The Southwest Arkansas Archeology List [SWAR_ARCH] is meant to help spread information about archeological news and activities in southwestern Arkansas...and, of course, the list will remind members of the Kadohadacho Chapter of the Arkansas Archeological Society about the monthly meetings.

To join simply send an e-mail message to SWAR_ARCH-subscribe@yahoogroups.com

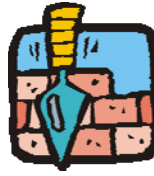
You may also join be e-mail list by contacting Jamie Brandon at jcbrandon@saumag.edu

Wednesdays are Volunteer Lab Days

Currently we are continuing the long-held tradition of having a volunteer laboratory day on Wednesdays. If you are interested in getting some "hands on" experience with archeological materials in the lab, stop by and see us on any given Wednesday. If there is interest following the restart of regular meetings in February, we may begin a monthly laboratory night to accommodate those who can only volunteer after normal business hours.

Society Web Site

Updated every month! Check it out at <http://www.arkarch.org>. The January book spotlight is *Ancient Pottery of the Mississippi Valley* by William H. Holmes, Gustavs Library, Davenport, Iowa, reprinted 2005 (originally published in 1884). Send news to editor Glen Akridge at dgakridge@hotmail.com.



Upcoming Conferences & Meetings

- **February 10, 2007**—The *East Texas Archeological Conference* at the University of Texas at Tyler Campus in Tyler, Texas. Contact Mark Walters. At walters@tyler.net for more information.
- ★ **March 16-18, 2007**—*Caddo Conference, Right here in Magnolia, AR!* Contact David Jeane, djeane@centurytel.net for more information.
- **March 23-24**—*Eastern States Rock Art Research Association*. Petit Jean Mountain. The conference will consist of a rock art field trip (to Petit Jean State Park) on Friday and papers on Saturday. Contact: Michelle Berg Vogel at michellebv@hotmail.com
- **April 25-29, 2007**—*Society for American Archaeology*, Austin, TX. Info: <http://www.saa.org>
- **April 26-28, 2007**—*Arkansas Historical Association*, Little Rock, Ark. Theme: "Not Just Black & White: The Fight for Civil Rights in Arkansas." Contact: Laura Miller, laura_a_miller@nps.gov
- **September 28-30**—*Arkansas Archeological Society*, Mountain View, AR. Info: www.arkarch.org

Contact Us:

Dr. Jamie C. Brandon
Research Station Archeologist
Southern Arkansas University Research Station
PO Box 9381
Magnolia, AR 71754
870-235-4229
jcbrandon@saumag.edu

David R. Jeane
Research Associate
Southern Arkansas University Research Station
PO Box 9381
Magnolia, AR 71754
870-235-4230
drjeane@saumag.edu



<http://www.saumag.edu/archeology>

Kadohadacho Chapter- Arkansas Archeological Society
Southern Arkansas University
PO Box 9381
Magnolia, AR 71754
<http://www.saumag.edu/archeology>

