

Note: The December meeting will also include the traditional Christmas Potluck—so bring a dish and enjoy the food!



KADOHADACHO NEWS

A Chapter of the Arkansas Archeological Society Serving Southwestern Arkansas and the Ark-La-Tex



New Series, Volume 3, Issue 10

December 2008

December 9 Program: George Lankford Talks about Native American Myths and Archeology

The program for the December meeting of the Kadohadacho Chapter of the Arkansas Archeological Society will feature Dr. George Lankford, who will be talking to us about his work with reconstructing lost myths used by prehistoric Native Americans.

All students of the past bump into what seem to be impenetrable walls and are left looking longingly beyond the barrier for the lore that seems hopelessly lost. Dr. Lankford's work shows us that all that information is not necessarily lost. It may just need a different approach—perhaps multidisciplinary, perhaps a new method, or maybe just with a new hypothesis for testing. Lankford does just this in attempting to understand the mythic stories behind the masses of raw data (artifacts) left behind by prehistoric Native American groups. It is not an easy process, but it is engaging, and any puzzle-solver will find this sort of detective work worth the effort.

Lankford is a Professor Emeritus at Lyon College in Batesville, Arkansas, where he served



Dr. George Lankford is a Professor emeritus at Lyon College in Batesville, Arkansas, and a nationally recognized scholar in folklore, anthropology, religious studies and ethnohistory.

as endowed professor and chair of Social Sciences. He holds a Ph.D. in folklore from the University of Indiana, but has long been working at the intersection of many disciplines—including folklore, anthropology, history and religion. Dr. Langford has authored numerous books and articles, including *Native American Legends* (*Southeastern Legends: Tales from the Natchez, Caddo, Biloxi, Chickasaw, and Other*



Shell gorget from the Sanders site in the Red River Valley in Lamar County, Texas. The depiction of severed human heads is a common theme in Mississippian symbolism. The Sanders site dates mainly to the Middle Caddo period, about A.D. 1200-1400, and seems to have had a special relationship with Spiro, the nature of which is debated. Image and caption courtesy Texas Beyond History.

Nations (1987), *Bearing Witness: Memories of Arkansas Slavery* (2006), *Looking For Lost Lore: Studies in Folklore, Ethnology and Iconography* (2008) and *Reachable Stars: Patterns in the Ethnoastronomy of Eastern North America* (2007) His current research interests are in prehistoric iconography, ethnoastronomy, Native American myth interpretation and local antebellum history. In his 30 years as a college professor, he taught anthropology, religion, local history (Ozarks) and mythology.

Come learn about Dr. Lankford's explorations of Native American myth and archeology on **December 9th at 7:00pm in Bruce Center room 104 on the campus of Southern Arkansas University**. Come early and bring your artifacts for "show and tell."



Archeology Month Programs Needed

March is Arkansas Archeology Month—an annual celebration to commemorate Arkansas's cultural heritage as revealed through archeology. Exhibits, lectures, demonstrations, and other activities are scheduled throughout the state at museums, historic sites, state parks, libraries, and colleges to celebrate this special month.

Do your part to arrange for a few activities in southwestern Arkansas. Small exhibits of books, artifacts, and brochures can be put together at local libraries or museums. Consider giving a slide or PowerPoint talk to a civic club, or lead a tour of an archeological site.

All submissions must be received by **January 5** to be included in the printed Events Brochure. Check the Survey web site for more information. This year's theme is *Planting the Seed*, but programs can be on any archeological topic. Information and activity ideas can be found on the Survey web site at

<http://www.uark.edu/campus-resources/archinfo/archmonth.html>



"Christmas and Candlelight" at Historic Washington State Park.

Winter Events at Historic Washington State Park

22nd Annual Christmas and Candlelight, DEC 6, 2008:

1 pm - 8 pm

Southwest Arkansas's premier Christmas event showcases Historic Washington at its loveliest. The entire park can be seen with natural 19th century decorations. After dark, luminaries light the way for you to stroll the streets and see historic buildings and musicians caroling throughout the town. This event is presented by the Southwest Arkansas Regional Archives (S.A.R.A.) Foundation, Pioneer Washington Restoration Foundation, the City of Washington, and Historic Washington State Park. For \$1 off ticket prices, purchase them in advance by contacting S.A.R.A., (870) 983-2633.

Admission: \$10 adults, \$5 children

Contact: (870) 983-2684

HistoricWashington@arkansas.com

"Christmas Past" in Washington, DEC 9-19, 2008: 10 am - 2 pm

Learn how our forebears celebrated the season! See the historic homes and buildings decked out in natural period decorations. Special curriculum-based school

programs relating to the Christmas season and preparation for winter will be presented daily during this two-week period. Teachers, contact the park for further details and reservations.

Admission: \$5.50

Contact: (870) 983-2660

HistoricWashington@arkansas.com

22nd Annual Christmas and Candlelight, DEC 13, 2008:

1 pm - 8 pm

Southwest Arkansas premier Christmas event showcases Historic Washington at its loveliest. The entire park can be seen with natural 19th century decorations. After dark, luminaries light the way for you to stroll the streets and see historic buildings and musicians caroling throughout the town. This event is presented by the Southwest Arkansas Regional Archives (S.A.R.A.) Foundation, Pioneer Washington Restoration Foundation, the City of Washington, and Historic Washington State Park. For \$1 off ticket prices, purchase them in advance by contacting S.A.R.A., (870) 983-2633.

Admission: \$10 adults; \$5 children

Contact: (870) 983-2684

HistoricWashington@arkansas.com

"Trial by Jury" Dinner; JAN 17, 2009: 6 pm - 9 pm

Justice is served and you are the jury. After enjoying an evening meal at Williams' Tavern Restaurant, you will proceed to the 1836 Courthouse. There you will take part in a living history drama where you judge the guilt or innocence of a man accused of murder. The drama is based upon an actual 1844 trial that took place in the same courtroom. Dress casual or wear your favorite 19th century costume. Reservations are

required. Inclement weather date: January 24.

Admission: \$25 adults; \$20 children under 14

Contact: 870-983-2684

HistoricWashington@arkansas.com

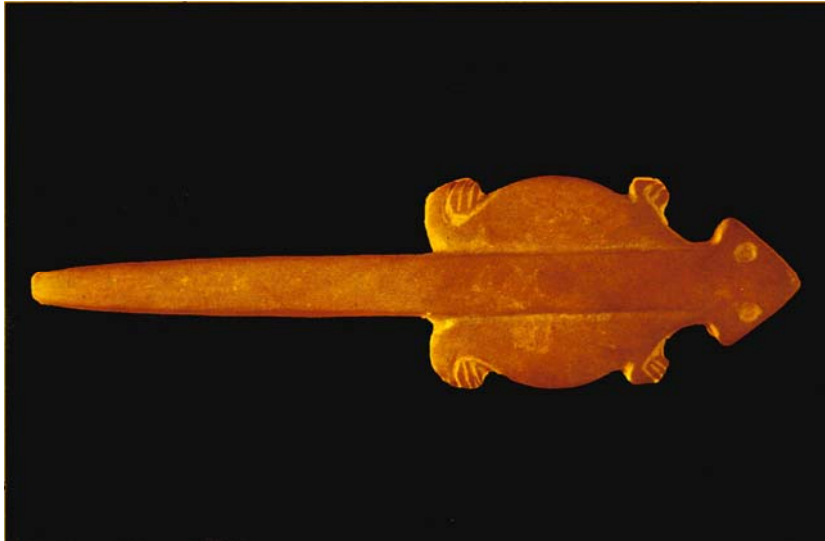
Arkansas Civil War Sesquicentennial Website

The Arkansas Civil War Sesquicentennial Commission recently unveiled its new website at:

<http://www.arkansascivilwar150.com/>

...and announced plans for the observance of the 150th anniversary of the war between 2011 and 2015. The Arkansas Civil War Sesquicentennial Commission plans to provide 'one-stop shopping' for all events and sites associated with the war in Arkansas and will continually update its content. The Commission also is developing a series of themes for each of the four years of the sesquicentennial,





Pic of the Month: Often called "lizard effigy" beads in the literature, the least stylized and presumably earliest of these objects represent a small animal, possibly a beaver, carrying on its back a long spatulate celt of the Early Caddo era. A highly stylized version of these beads carved from shell appears often in late Caddo sites in the Red River Valley. Similar specimens have been found as far east as Arkadelphia on the Ouachita River and as far west as Wood County, Texas (Schambach and Early 1985:Slide 58).

which will help local organizations make plans for local observances. We hope to announce those themes in early 2009.

The website features five major sections: 1) Arkansas Civil War Sites, which includes Civil War-related battlefields, museums and buildings in addition to opportunities for site preservation; 2) Events, a comprehensive listing of commission-sanctioned sesquicentennial events and exhibits, as well as information on reenactments and other activities leading up to the sesquicentennial; 3) Research and Education, which includes links to Civil War lesson plans, links to archives with Arkansas Civil War materials, an Arkansas Civil War bibliography and timeline, and a list of potential research topics; 4) Links, which features links to Civil War-related organizations and sites; and 5) Photos, a gallery of historic photos, images of artifacts and photographs of reenactments to which the public is welcome to add their own pictures.

Upcoming Conferences & Events

- **January 7-11**—*Society for Historical Archaeology*, Toronto, Ontario, Canada. For more info: <http://www.sha.org/about/conferences/2009.htm>
- **March 31-April 3**—*Arkansas Museums Association*, Mosaic Templars Cultural Center, Little Rock. Theme: "Rising from the Ashes, Surviving in the Midst of Change." For info: Stephan McAteer at smcateer@littlerock.org
- **April 22-26**—*Society for American Archaeology*, Atlanta, GA.. Info: <http://www.saa.org>
- ★ **April 23-25**—*Arkansas Historical Association*, **right here in Magnolia, Arkansas**. Theme: "The Arkansas Environment." Info: <http://www.uark.edu/depts/arkhist/home/annual.html>

Contact Us:

Dr. Jamie C. Brandon
Research Station Archeologist
Southern Arkansas University Research
Station
PO Box 9381
Magnolia, AR 71754
870-235-4229
jcbrandon@saumag.edu

David R. Jeane
Research Assistant
Southern Arkansas University Research
Station
PO Box 9381
Magnolia, AR 71754
870-235-4230
drjeane@saumag.edu



<http://www.saumag.edu/archeology>

Kadohadacho Chapter- Arkansas Archeological Society
Southern Arkansas University
PO Box 9381
Magnolia, AR 71754
<http://www.saumag.edu/archeology>

